

The Real

MARY KING'S CLOSE

MAKING EDINBURGH'S HIDDEN HISTORY UNMISSABLE



Classroom activities for Creative Learning

Developed in partnership with Arts & Creative Learning, City of Edinburgh Council

Creative learning activities which are suitable for all pupils and including all curricular areas via interdisciplinary approaches in response to their visit. These open ended activities can be adapted to suit the needs and interests of your learners, whilst developing creativity and employability skills.

If your pupils make a poster/photo/film/ model (anything!) please send it to us and the students will get a certificate!



Creative response to you tour:

1. Photocopy or display on a whiteboard this word wall: invite pupils to write/suggest words or phrases from their visit. The red words can be prompts if needed. Please follow the link to the word wall: <http://bit.ly/2k3JOMQ>

smells

sounds

colours

feelings

atmosphere

objects

characters

The Real

MARY KING'S CLOSE

Interdisciplinary investigation:

2. Use the individual/ group class word wall to be inventive, for example:

- Write a poem
- Write a film or a conversation between characters
- Make a collage
- Make a poster
- Make a map
- Create a model
- Dress a doll
- Design an outfit
- Make accessories for the characters
- Can you think of anything else?

What else
can you
imagine?



Be open
minded

The Real



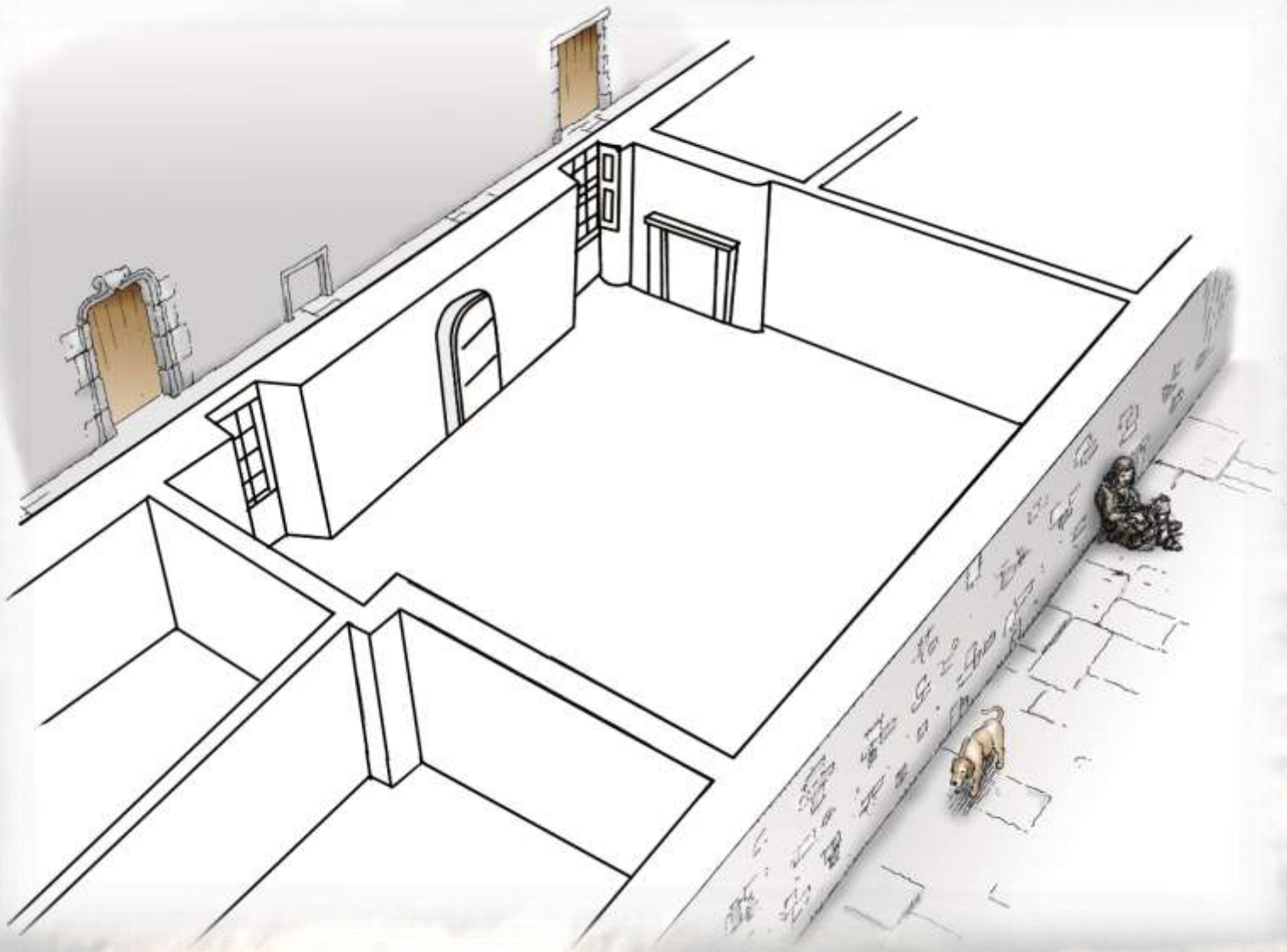
MARY KING'S CLOSE

3. This task is for the pupils to recall their visit and remember what they felt saw when they were on the Close:

- What would you miss the most from life nowadays?
- How would you feel if you had to share your room with your all your family? Pros/cons?
- What would your life be like on the closes in the 17th century in Edinburgh? Do you live in a house or a flat? Do you know your neighbours? What would Mary King think about your street?
- Design your own 17th century room or house as a drawing or make a shoebox model.



Follow the link to the 17th Century House: <http://bit.ly/2kZWn06>





The Real

MARY KING'S CLOSE

4. Do the pupils remember Annie's story? She had the plague and her parents chose to abandon her as they were scared of catching the disease too.

- How did you feel when you heard the story? Would you understand the situation of Annie's parents?

- Is there any situation happening in the world at the moment that you could relate to Annie's story?

Discuss in class or with a partner.

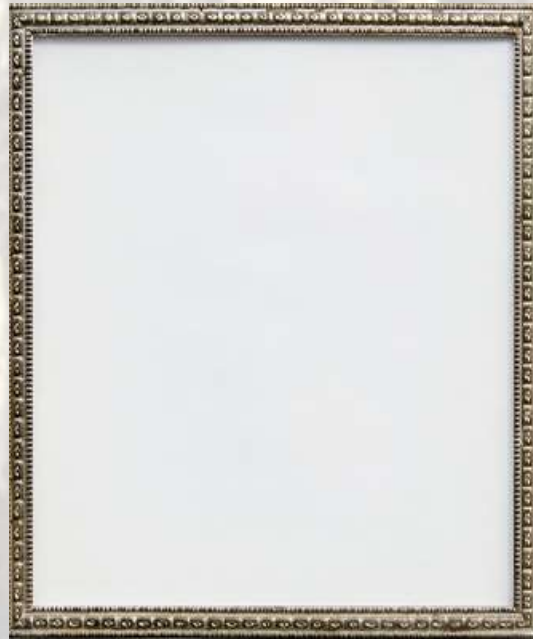


The Real

MARY KING'S CLOSE

5. Ask the pupils to design a new character tour guide for The Real Mary King's Close. Remind them to include the character's name, age, occupation, likes and dislikes, etc.

My character



- Name:
- Age:
- Where does she/he live?
- What's your characters physical description? What are the character's eyes and hair colour? Is he or she tall or short? Explain!
- What kind of clothes does she/he wear? Are they similar to yours?
- What are his/her daily tasks and chores? Do you do any of these tasks at home?
- What does he or she enjoy doing?

Try to use interesting adjectives and colourful verbs in your narrative!



The Real

MARY KING'S CLOSE

Challenging
and
sharing!!!

6. With the new character ask the class to:
 - Write a diary entry
 - Write a new tour
 - Create a job description for the new character.
 - Write a poem
 - Make up a puppet show
 - A "to do" list
 - Act out the character. Dress up like him/her!
 - What else could you do?
 - Swap stories with your classmates and ask questions about the character!

Who will they create?

If your pupils make a poster/photo/film/ model (anything!) please send it to us and the students will get a certificate!

For enquiries, bookings and prices, please contact Marta Coco at:
mcoco@realmarykingsclose.com or call +44 (0)131 225 0675



